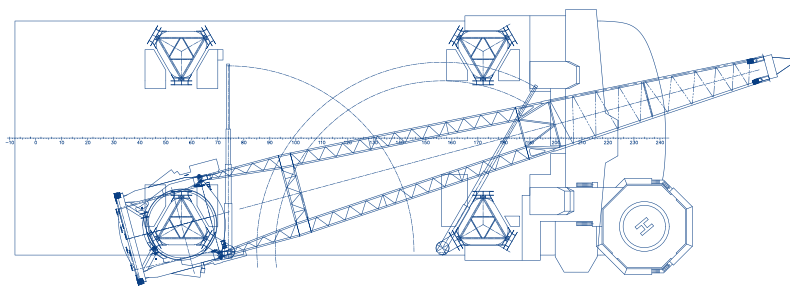
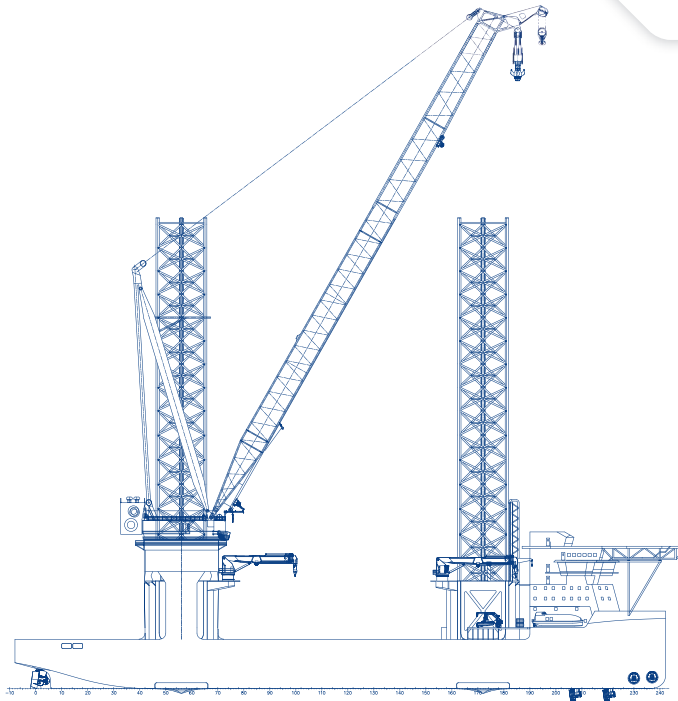




**Equipment**

**Offshore installation vessel  
Boreas**



## Boreas

Name	Boreas	Auxiliary Crane 1	32,5 ton / 45 m
Type	Offshore installation vessel	Auxiliary Crane 2	20,0 ton / 50 m
Classification	✖ 1A Self-elevating unit, Wind turbine installation unit, Crane unit, E0, DYNPOS (AUTR), Naut (AW), LCS, BWM-T, ER(SCR), Clean (Design, Tier III), VIBR, BIS, Recyclable, Crane-offshore, Strengthened (DK), HELDK(S,H), SPS, Shore power, Battery (Power), LFL FUELLED, Smart (EEN) with statement of compliance COMF – V(3) C(3), 2009 MODU, parts applicable for WITV, Ultra-Low NOx emissions icw Smart(EEN))	Propulsion	4 x 4,000kW = 16,000kW
Trading Area	Unrestricted	Retractable thrusters	2 x 2,700 kW
Year of construction	2024	Bow thrusters	2 x 2,700 kW
Dimensions	Length overall (excl. crane & heli deck) 175.1 m Breadth overall 63.0 m Depth (to maindeck) 13.2 m Draft (incl. spudcans) 8.4 m	Total installed power	> 21,750 kW (+ 5,000 kWh battery pack)
Gross tonnage	47,617t	Accommodation	121 single & 7 double cabins
Net tonnage	14,285t	Jack-up system	4 legs - length 126 m
Deadweight	± 20,000 ton	Clear deck area	7,150 m <sup>2</sup>
Speed	12 - 13 knots	Dynamic Positioning System	DP Class 2
Offshore installation Crane	Main hoist 3,200 ton Auxiliary hoist 500 ton	Environmental	Dual Fuel MGO and methanol IMO Tier3 / EPA Tier3 compliant Ultra low NOx SCR installed 5,000 kWh battery pack installed

### Contact

**Van Oord**  
 PO Box 8574  
 3009 AN Rotterdam  
 The Netherlands  
**T** +31 88 8260000  
**F** +31 88 8265010  
**E** info@vanoord.com  
**I** www.vanoord.com

**Van Oord Offshore Wind**  
 PO Box 458  
 4200 AL Gorinchem  
 The Netherlands  
**T** +31 88 8265200  
**F** +31 88 8265210  
**E** area.ow@vanoord.com