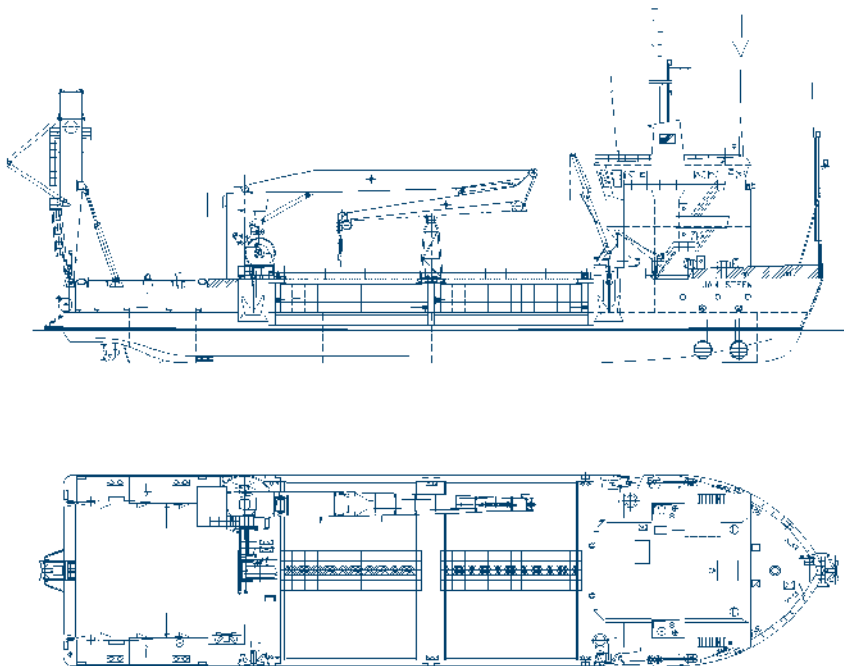




Multipurpose construction vessel
Jan Steen

equipment



Jan Steen

Name	Jan Steen
Type	Offshore support vessel
Classification	Bureau Veritas, I ✕ Hull ✕ Mach ✕ AUT-UMS ✕ ALM ✕ Dynapos - AM/AT-R special service- multi-purpose support vessel, unrestricted navigation ICE III
Year of construction	1986
Year of upgrading	2004
Dimensions	Length overall 77.72 m Breadth overall 19.14 m Moulded depth 5.0 m Draught 4.04 m Moonpool 1.2 x 1 m, 7.20 x 4.80 m
Loading capacity	Bulk material 1,824 tons Deck space 700 m ² Deck load 10 ton/m ²
Deadweight	1,853 tons
Speed loaded	7 kn
Propulsion	2 x 855 kW
Bow thrusters	2 x 600 kW
Total power installed	4,371 kW
Knuckle boom crane	Capacity (single/double fall) 30/60 t SWL Heave compensation (active) +/- 1.5 m @ 10 s Working depth 350/175 m Hoisting speed 25 - 60 m/min Max. trim/list 5/2 degrees Slewing speed 0.7 rpm

Stern lifting frame	Capacity (single/double fall) 75 t/150 t SWL
	Working depth 750/350 m
	Reach outboard/inboard 11/10 m
	Lifting height 15 m
Positioning	DP Class 2, DT
Reference systems	DGPS/tautwire/H.P.R.
Accommodation	45 persons (53 optional)
Mooring system	4-points
Bunkers	Marine gas oil 431 m ³ Fresh water 131 m ³

Van Oord

PO Box 8574
3009 AN Rotterdam
The Netherlands
T +31 10 4478444
F +31 10 4478100
E info@vanoord.com
I www.vanoord.com

Van Oord Offshore bv

PO Box 458
4200 AL Gorinchem
The Netherlands
T +31 183 642200
F +31 183 642708
E area.off@vanoord.com