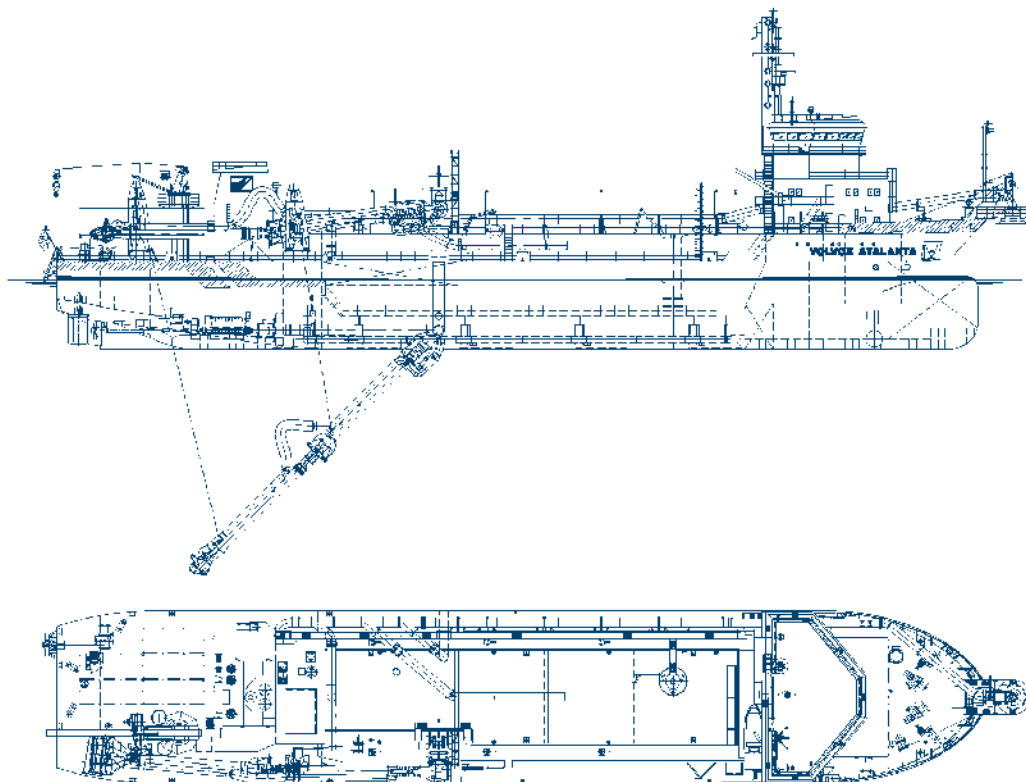




Trailing suction hopper dredger
Volvox Atalanta

equipment



Volvox Atalanta

Name	Volvox Atalanta	
Type	Trailing suction hopper dredger	
Classification	Bureau Veritas, I ✕ Hull ✕ Mach ✕ AUT-UMS, hopper dredger, unrestricted navigation, dredging within 15 miles from shore or within 20 miles from port. Dredging over 15 miles from shore with H.S. ≤ 2.5 m	
Year of construction	1999	
Dimensions	Length overall	92.92 m
	Breadth overall	17.04 m
	Moulded depth	8.60 m
	Dredging draught	6.77 m
Hopper capacity	4,692 m ³	
Deadweight	6,267 tons	
Maximum dredging depth	30 m	
Suction pipe	ø 900 mm	
Discharge pipe	ø 750 mm	
Speed loaded	12 kn	
Propulsion	3,370 kW	
Bow thruster	375 kW	
Total power installed	6,633 kW	
Pump drive	1,645 kW	
Inboard dredge pump	1,645 kW trailing	3,040 kW discharging

Van Oord

PO Box 8574
 3009 AN Rotterdam
 The Netherlands
T +31 10 4478444
F +31 10 4478100
E info@vanoord.com
I www.vanoord.com

contact